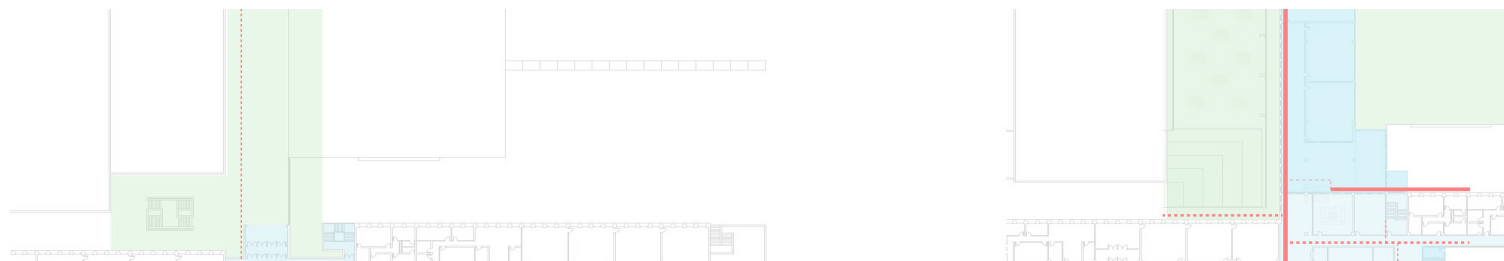
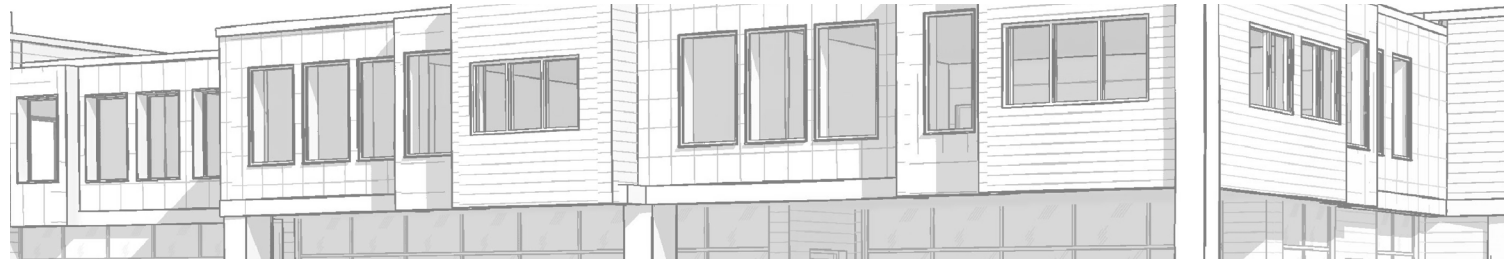


Marissa T. Nelson

Portfolio

Architecture, Sketches, Painting, Misc.



Professional Projects

Phase Zero Design
2021 - Present

04

Summer Street Residential Complex

08

The Reserve at Windham

Graduate Projects

Thesis
2020-2021

12

Architecture As Art

Undergraduate Projects

Senior Year
2019-2020

20

Fort Point Innovation Center

24

John D. O'Bryant School

Artwork
2016-2021

28

Sketches, Paintings, Charcoal

Table of Contents

Summer Street Residential Complex

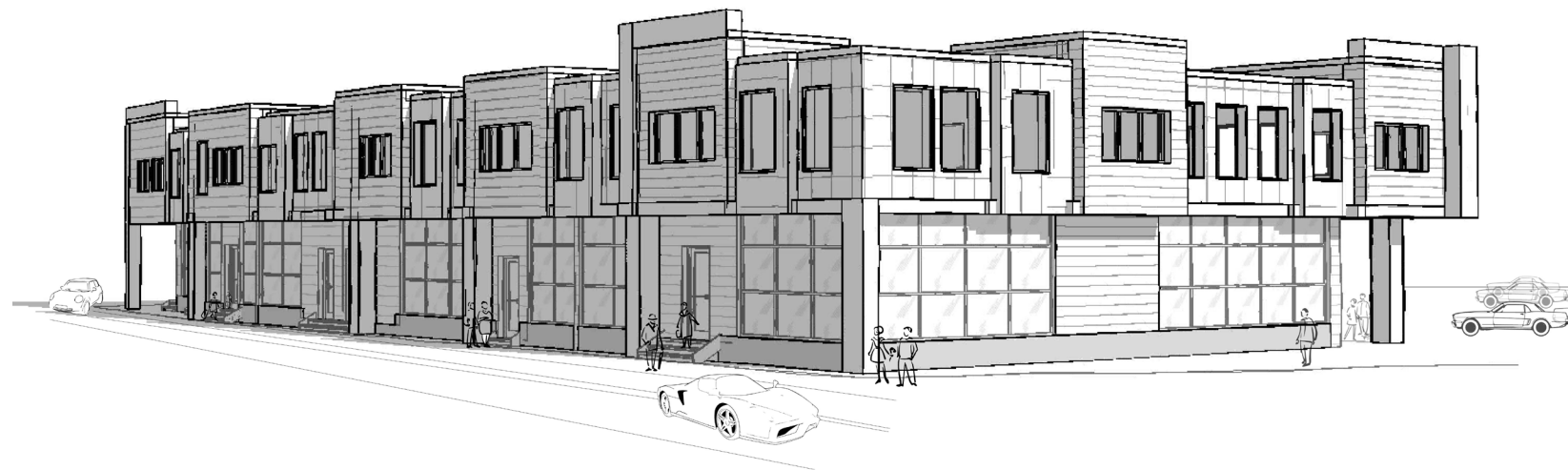
Location: Kingston, MA, USA

Status: Schematic Design

Role: Architectural Designer

Size & Program:

Tasks & Program(s): Zoning reasearch, Hand Drawing, Revit, Lumion, Illustrator



North West Corner Perspective



South West Corner Perspective. Hand drawn West Elevation

Zoning Analysis

65 Summer Street
Zone: TC

	Required	Proposed	Compliance
Use (Existing Retail)	Mixed Use / TND	Mixed Use, Retail/Multi-Family, Restaraunt	Variance
Min. Lot Area	10,000 sf	15,800 sf	Complies
Lot Frontage	50% Max Building Coverage 30% Min Site Coverage	19% Building Coverage	Complies
F.A.R.	1.0	0.35	Complies
Stories / Height	Max 40'	24'	Complies
Front Yard	15' setback	15' setback	Complies
Side Yard	15' setback	15' setback	Complies
Rear Yard	20' setback	20' setback	Complies
Parking	Retail/Restaurant 1/250 SF 6,900 = 28 Spaces MF 1.5 / Unit 10 Units = 15 Spaces	Retail - 28 Spaces MF - 15 Spaces	Complies

KINGSTON DEVELOPMENT
65 Summer Street, Kingston, MA
Zoning Analysis | 12/01/2021



Tasks & Program(s): Town House & Zoning research, Revit, Lumion, Illustrator



Design Inspiration



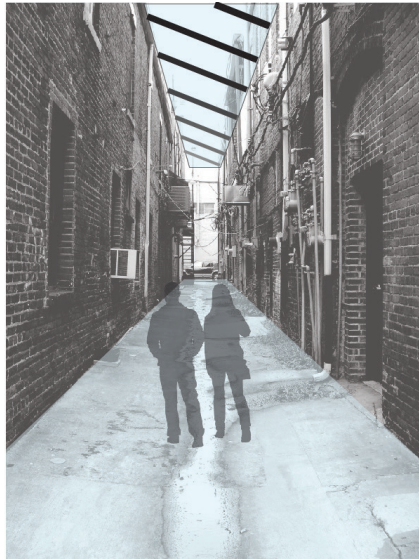
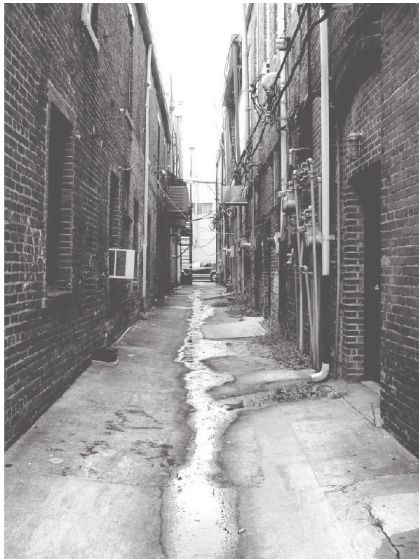
Front & Rear Elevation, material exploration



Architecture As Art

Integration of abstract expressionist concepts to enrich and connect communities at multiple scales.

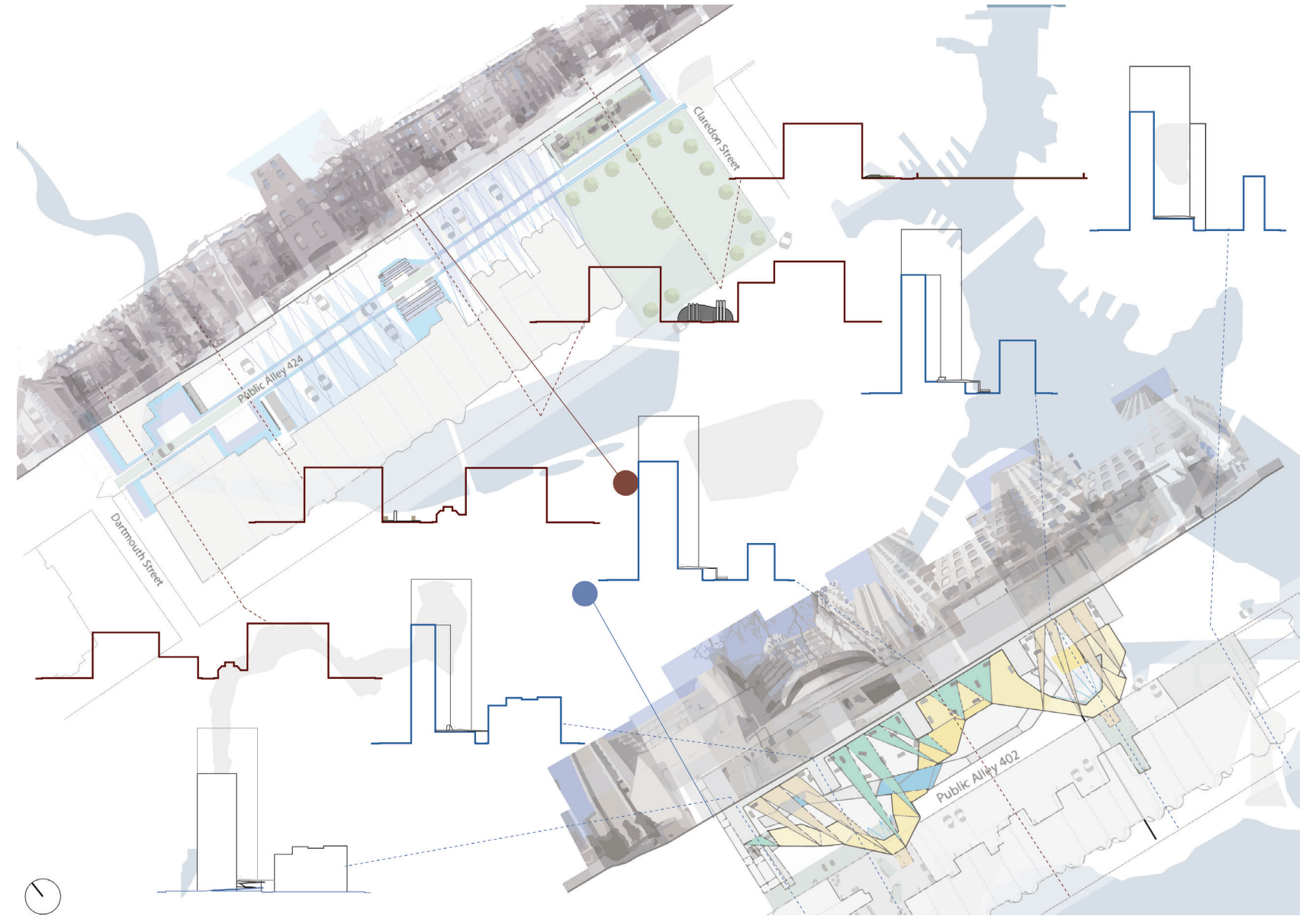
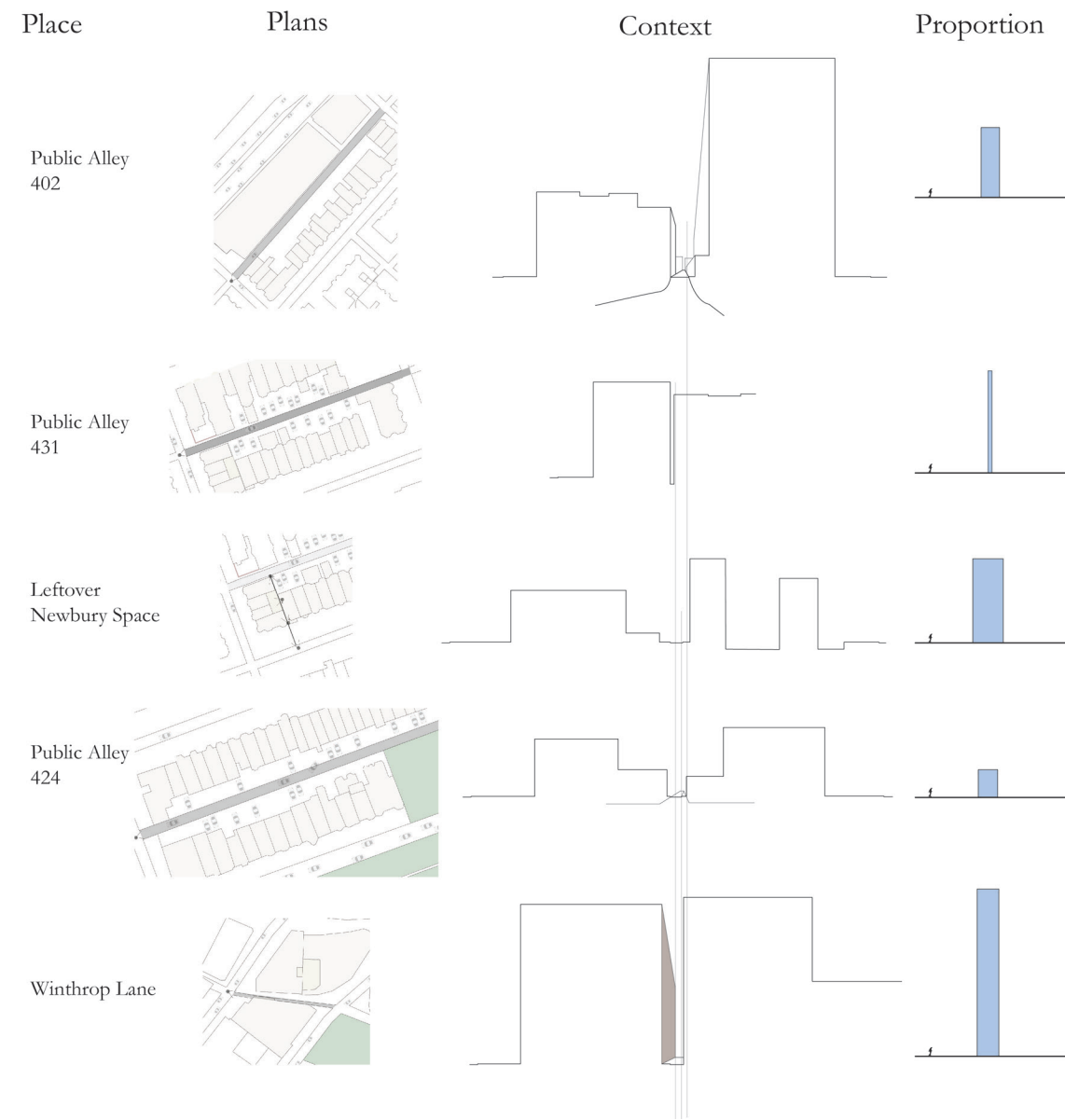
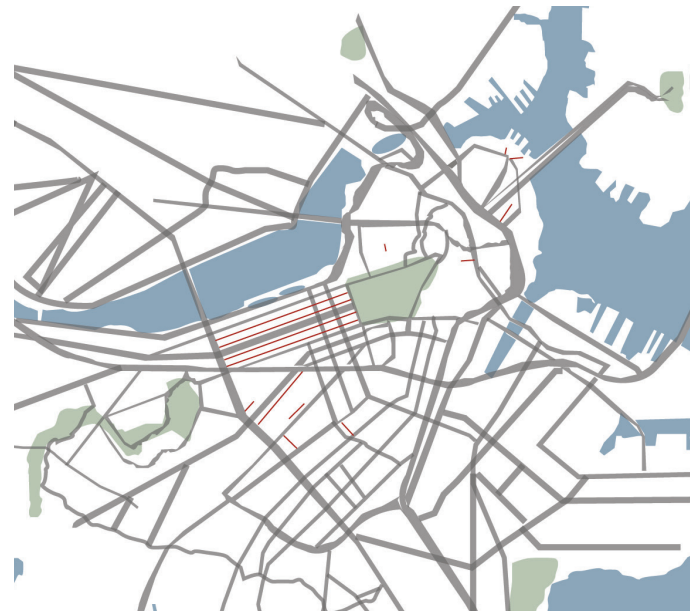
If allowed, illusion, interactivity, and vibrance can drive intention of the design away from bland and cold urban facades. By using the tension of painting's loose style and architecture's analytic process, modern architecture can restore some of its originality to urban settings at various scales. Artistic expression can enliven an urban setting through experience via interactivity, illusion, and relationship to the ground.

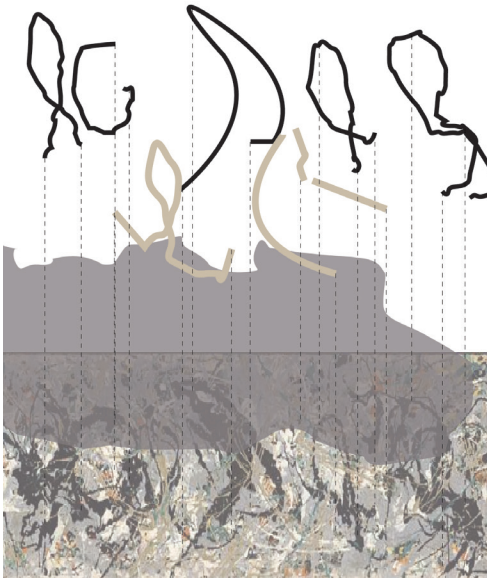


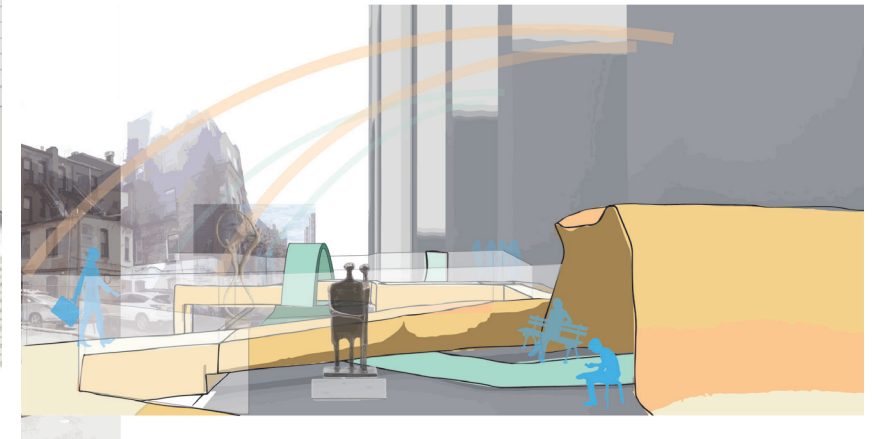
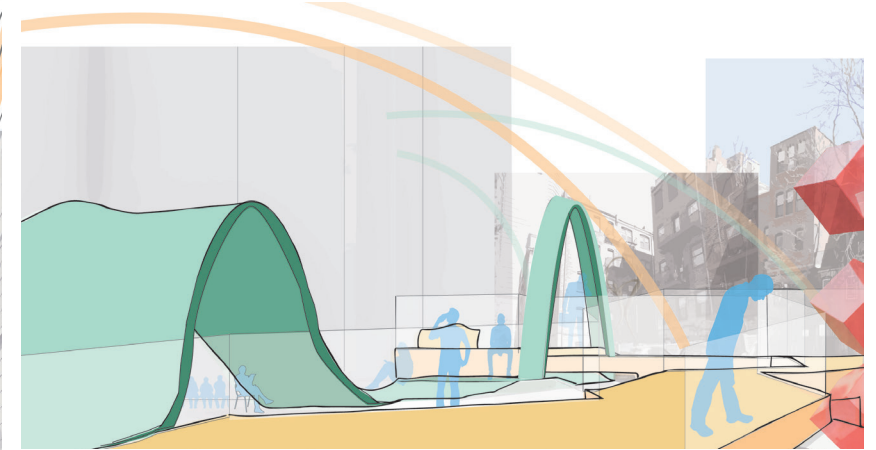
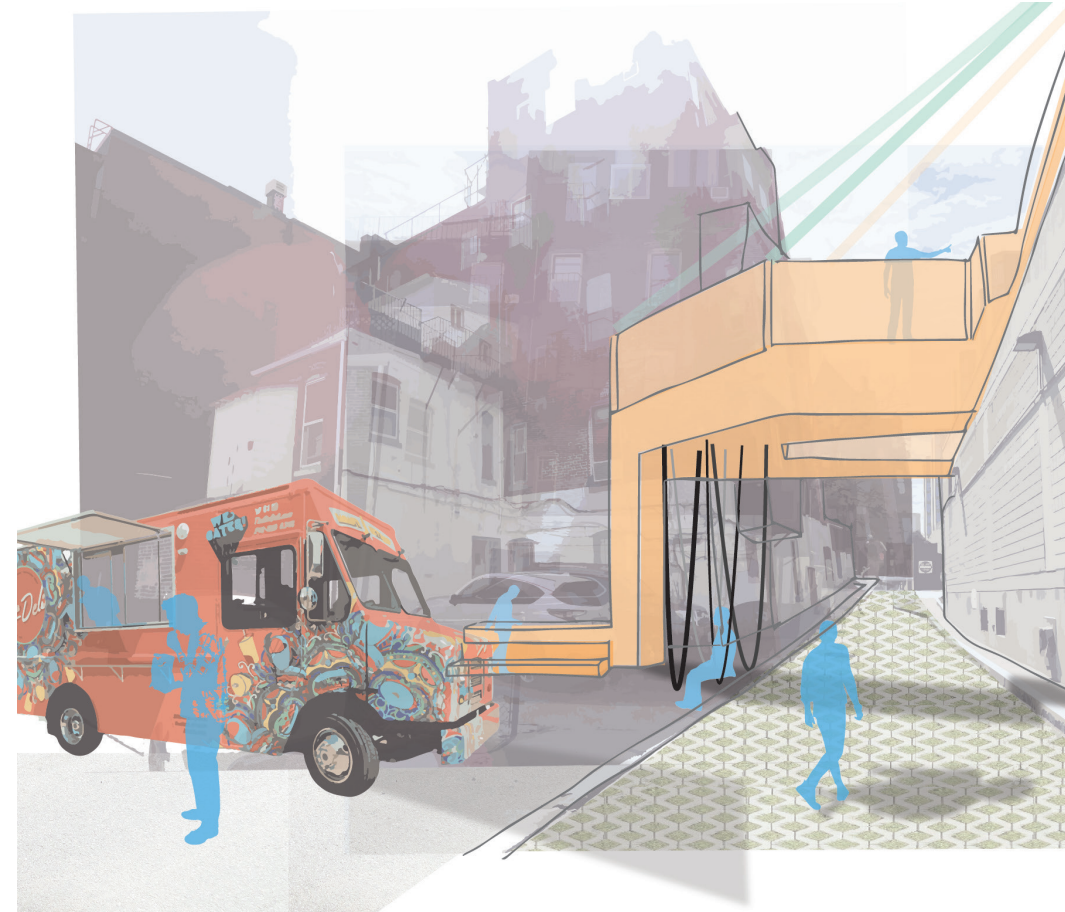
Study of alley way intervention

Kit of Parts	Public Alley 402	Public Alley 424
<p>Defined Thresholds</p> <ul style="list-style-type: none">- clearly laid out & called out- color indicator <p>Partial Shelter/Enclosure</p> <ul style="list-style-type: none">- comes up from indicated path(s)- same color as paths- creates partial enclosure <p>Community Interaction/Activity</p> <ul style="list-style-type: none">- functional- create space where the community can use it in different ways- create a space where the community can learn or participate in something		

Kit of Parts, applicable to different urban enviornments







Using model analysis to create inhabitable space
 Inserting functional and habitable spaces into urban alleys

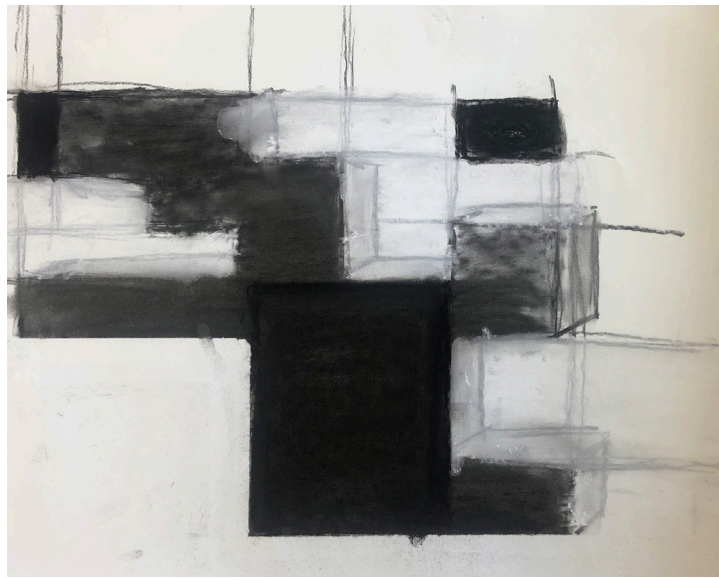
Fort Point Innovation Market

Physical vs. Visual Connections

These ideas were accomplished through differentiating pathways and entrances, and bleeding certain spaces. This project began by creating a specialized program for the Fort Point community. Finalizing the program for my specific design, i separated the program elements into three categories: facility, amenity, and community.

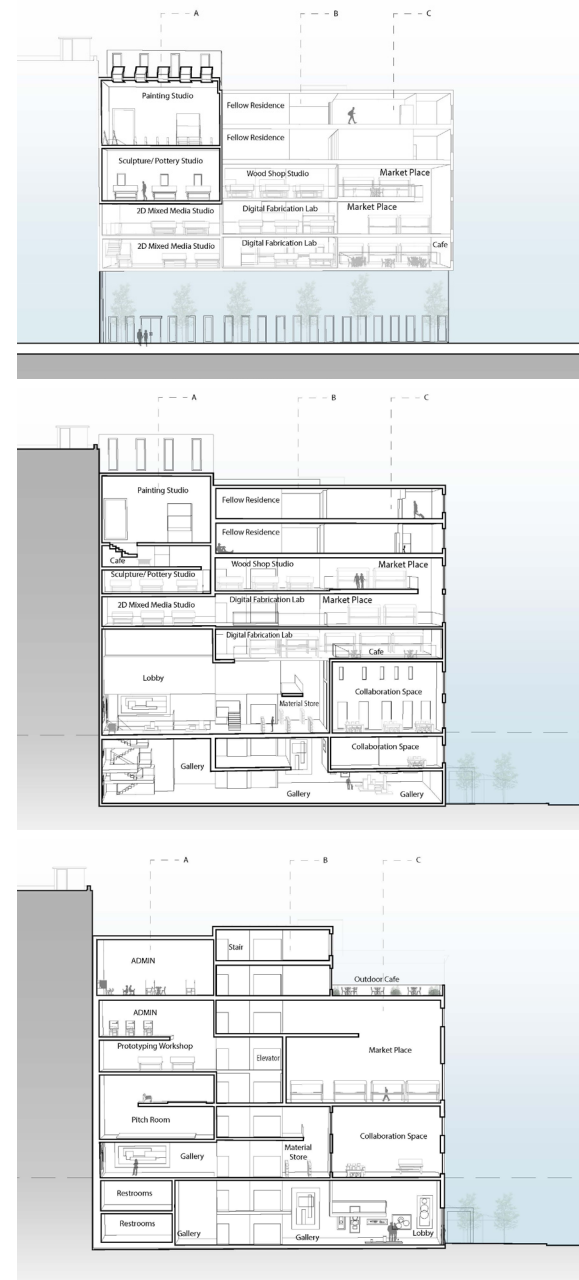
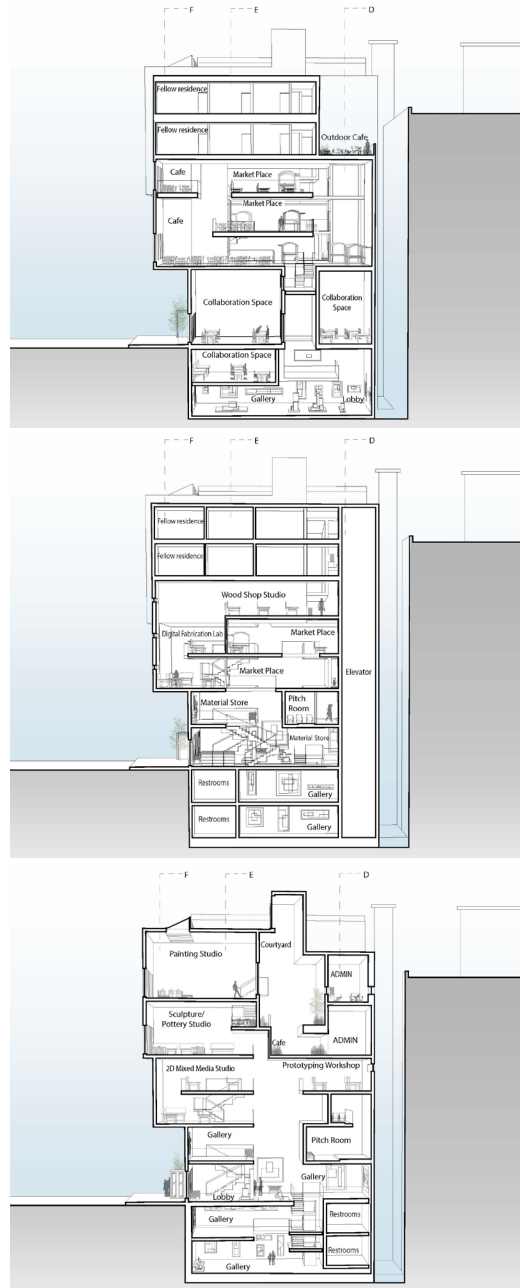


Perspective Views



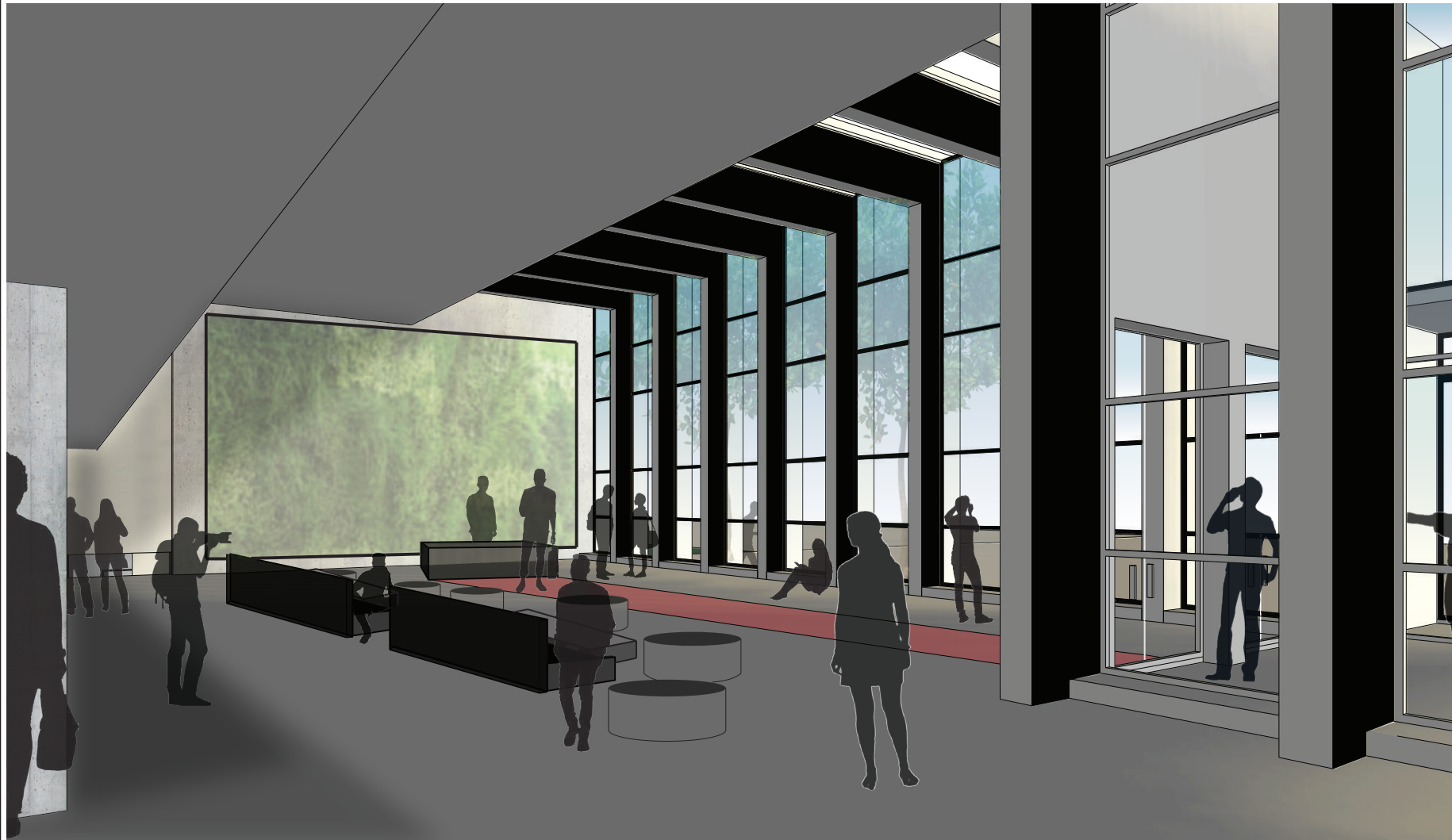
Conceptual Sectional Property Exploration



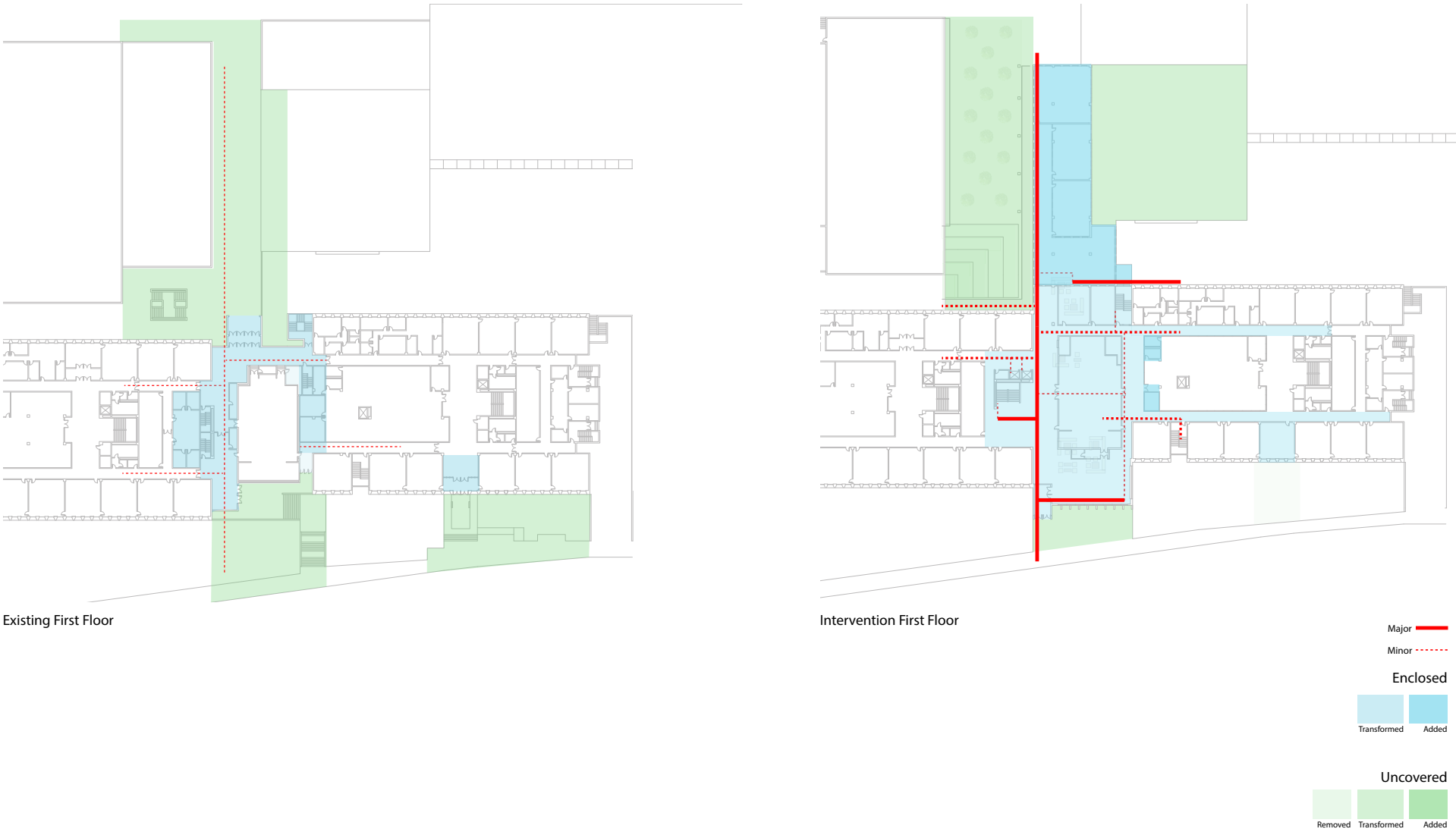


John D. O'Bryant School

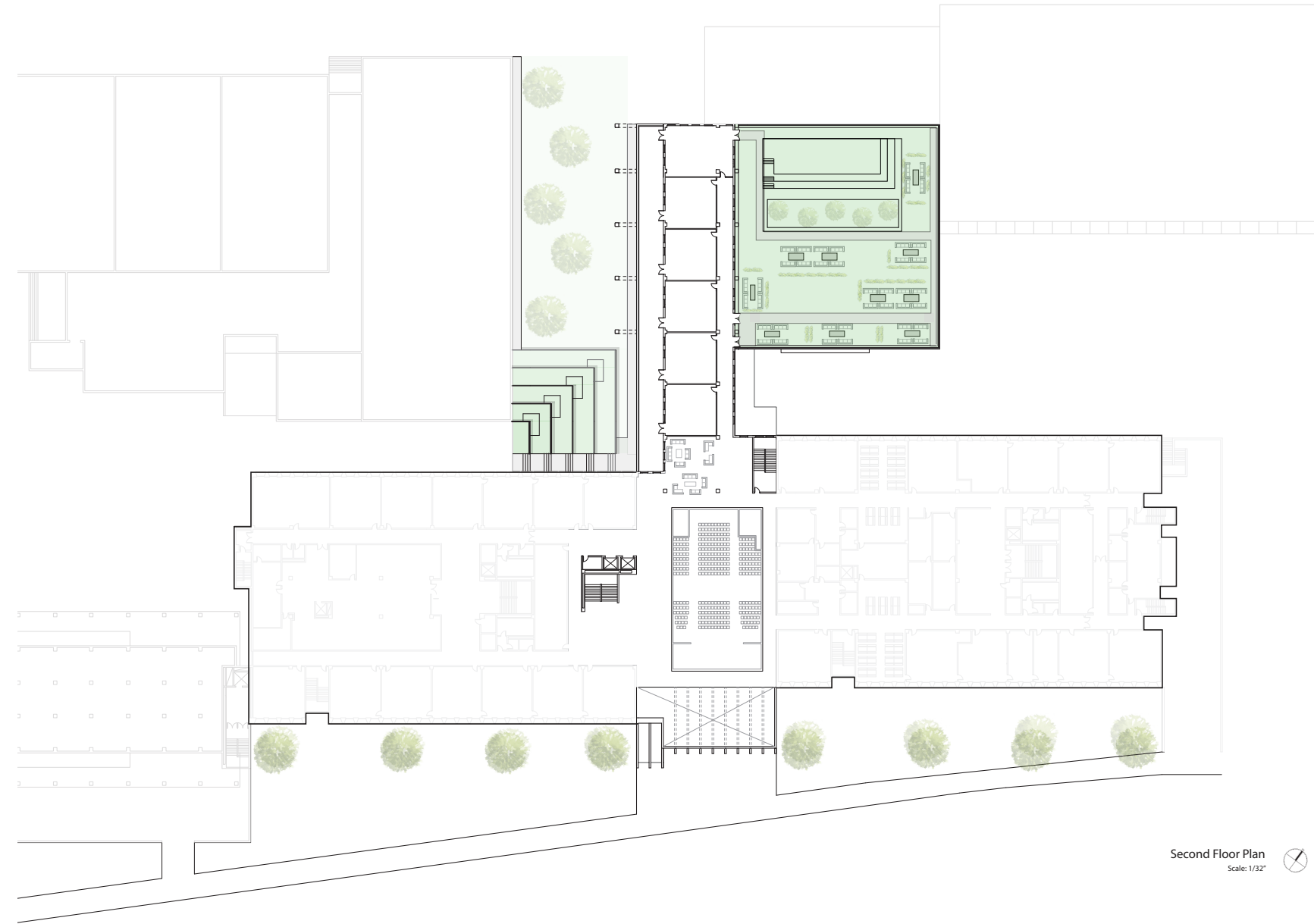
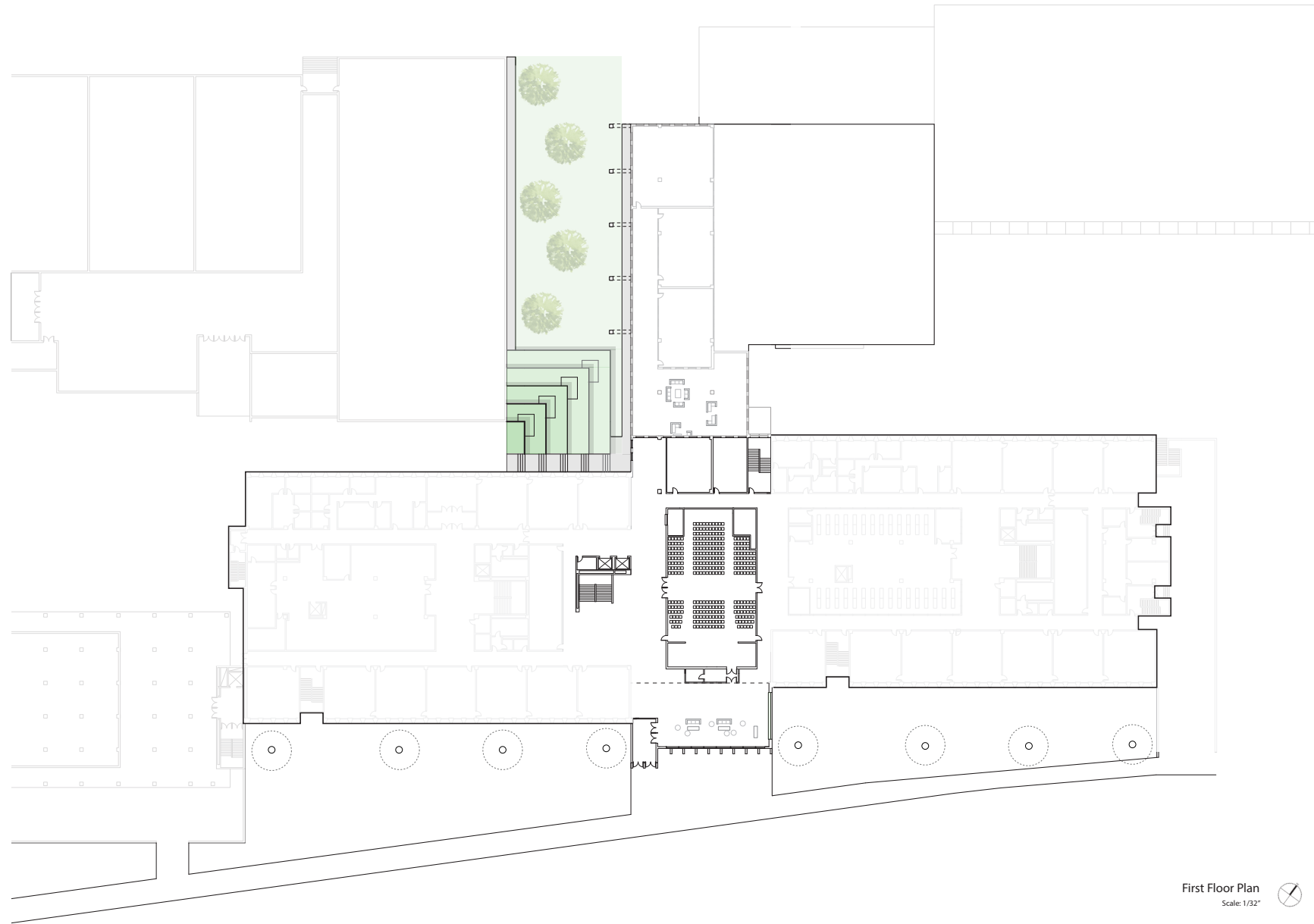
The John D. O'Bryant campus, constructed using Marcel Breuer's brutalistic tactics, is a strong symmetric concrete rythmed facade. In a misison to enclose and secure the campus an indoor/outdoor circulation passage along a pre-existing axis was formed. The axis is a flexible space between idoor collaborative spaces and revitalized outdoor spaces. The intervention helps students navigate the overcrowded hallways and make use existing gardens.



Lobby Perspective



Existing v.s. Intervention Plan Diagram

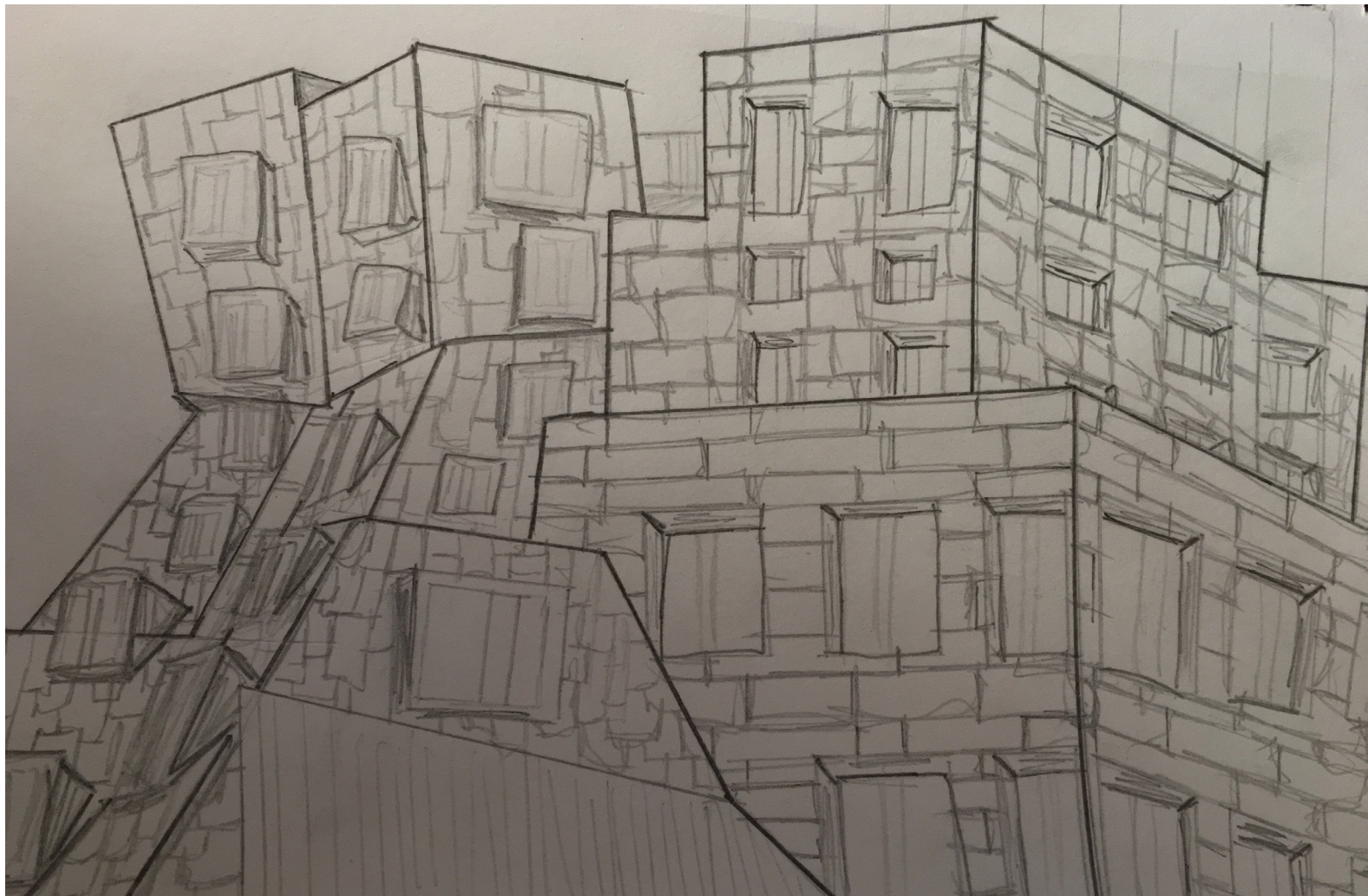


Street Level Floor Plan.

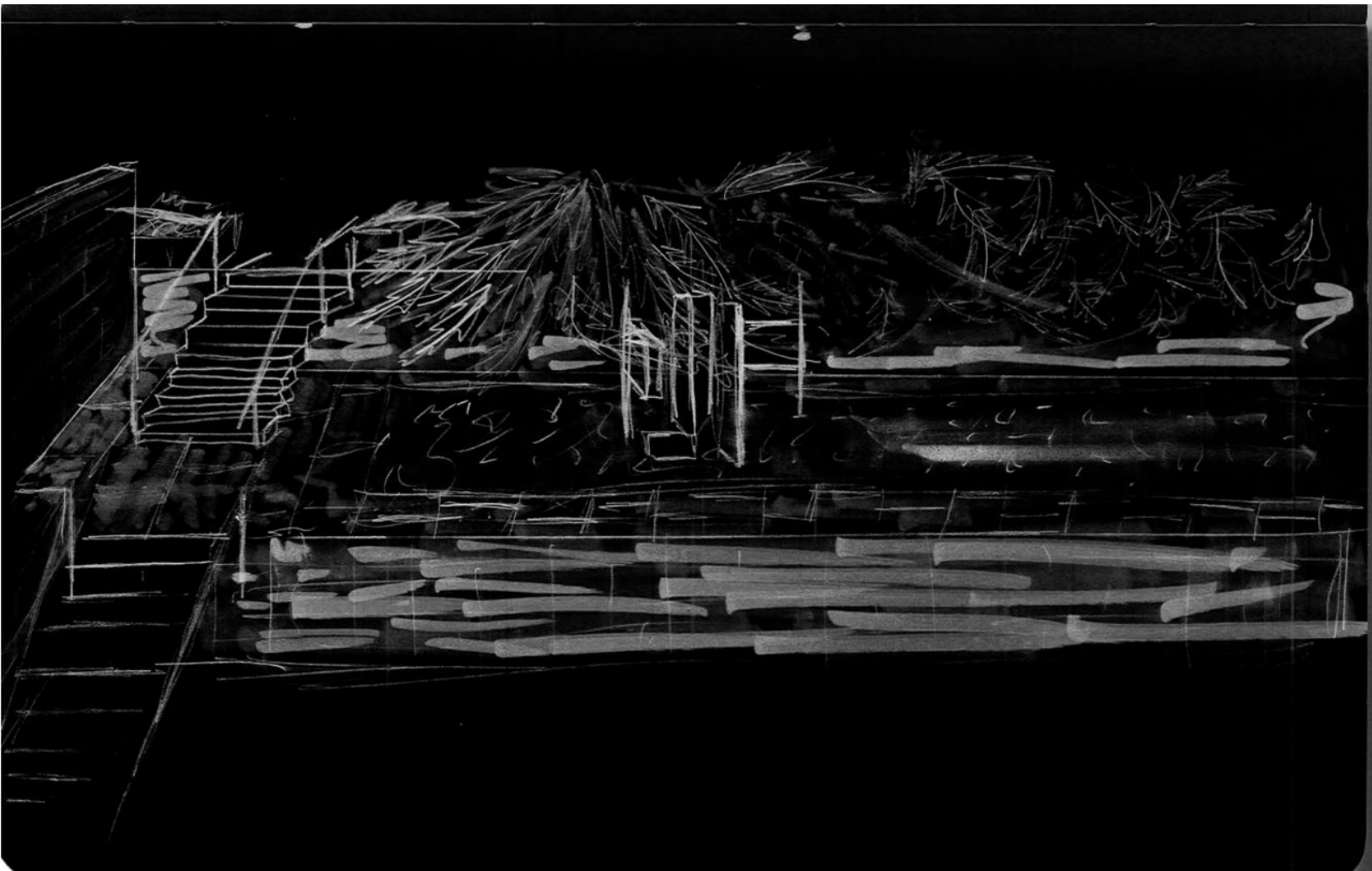
Second Floor Plan

Sketeches, Drawings, Paintings, Other

In this section, there is a collection of artwork that has been worked on throughout my architecture schooling. Most of these pieces are from over the course of a project and are related to its design. Some were used as perspectives, while others were simply for a visual aid when designing. Likewise, some are from site visits, and architectural tours and history classes. In the case of these drawings, you will find that these are simpler and done on site. As a result, there is a range of simple, to complex, and sketchy to clean.



Sketch at MIT Stratacenter
2016
Pencil



Sketch at Yale Art Gallery
2018
Marker, Pencil, Pen



Abstract Depth Studies
2020
Acrylic Paint



Personal Piece
2020
Acrylic Paint



Dome of the
Rock

↳ Jerusalem, Israel

Islamic shrine

→ section perspective

A hand-drawn diagram on a light brown background. In the center, there is a cluster of green, irregular shapes labeled 'Vegetation'. Surrounding this central area are several brown, rectangular shapes representing buildings. Some buildings are labeled 'veg' in green ink. Arrows point from the word 'Buildings' (written in brown ink) to the building shapes in four different directions: top-left, top-right, bottom-left, and bottom-right. An arrow points from the word 'Plan' (written in brown ink) to the central vegetation area. The word 'veg' is also written in green ink on some of the building shapes.

→ perspective

Geometry as
guiding formal
principle
representation of
people not acceptable

↓ masonry patterns

perspective
pointed
arches
&
ablaq
(rows of light
& dark stone)

THE INTENTION OF
THIS DESIGN WAS
TO COMBINE THE
LIGHT & DARK OF THE FLOOR PLAN
CATHEDRAL
/ CLASSICAL
PRINCIPLES

THIS WAS
ROTATED
90° TO THE
RIGHT

ON VIEW
THE
STRUCTURE

Doric
COLUMNS ON
THE EXTERIOR
FACADE

CIRCLE
CENTER
(FOCAL POINT)
&
SIMILAR
SIDES

EGLISE SAINT-GENEVIEVE

- ↳ ALSO CALLED "THE PANTHEON"
- ↳ ARCHITECT = JACQUES-GERMAIN SOUTHWELL
- ↳ PARIS, 1747-1790
- ↳ ORIGINALLY BUILT AS CHURCH CONTAINING RELICS OF ST. GENEVIEVE
- ↳ NOW A MAUSOLEUM

MARISSA NELSON
CHRISTINA LANZA
History Art & Culture

WHEN IT WAS A
MAUSOLEUM, THE
WINDOWS HAD
TO BE
BLOCKED

King Shulgi's burial chamber
1982 BCE

This is the
burial
chamber
of King
Shulgi. He
was the second
ruler of the
Ur III dynasty.
His rule was the
longest of all
the third kings.
Burial was likely
Shulgi had
constructed a
wall 155 m long
on the
western side

Elevation
2/25
BCE

↑ possibly the oldest arch in history

The City of Ux

marissa nelson
2100 Fall 2017
christina lazl

Materials

- Mud Brick

10:10 AM

Graph rates R.

Hand-drawn diagrams of a house and a car. The house is a simple rectangle with a chimney on the left side and a door on the right side. The car is a simple rectangle with a steering wheel on the left side and a door on the right side.

A hand-drawn diagram of a person's legs and feet, viewed from above. The legs are represented by two vertical lines. The feet are represented by two horizontal lines at the bottom. The 'L' label is placed on the left foot, and the 'R' label is placed on the right foot.

Front

↑ rounded
+ canals

the middle of the

There are 3 m

the structure

History Sketch Exploration
2017
Watercolor, Pen, Pencil